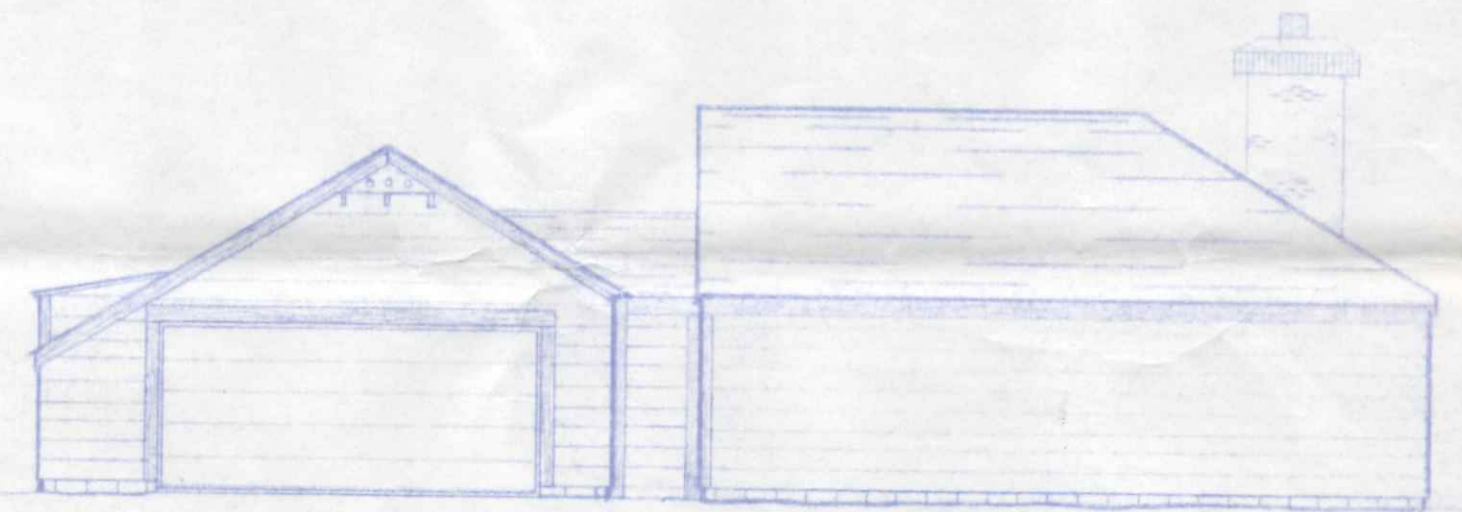


FRONT ELEVATION
1/4" = 1'-0"

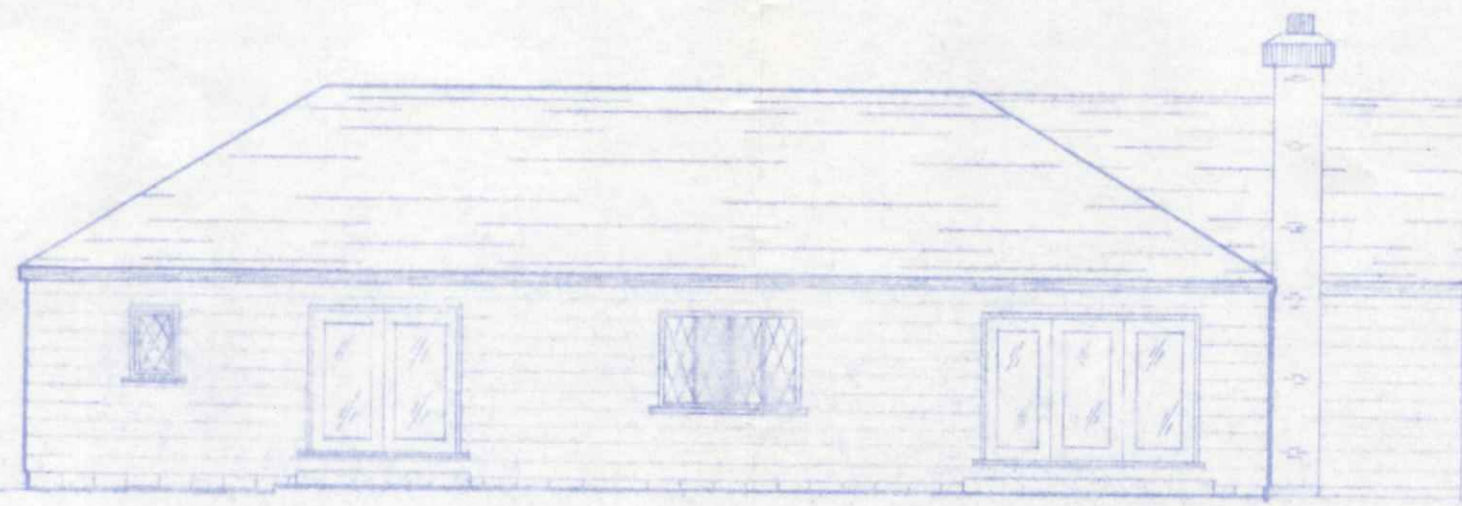
CITY OF NAPOLEON
BUILDING DEPT.
Plan Approval
By: *RW* Date: *7/15/84*
Permit *860*



LEFT ELEVATION
1/8" = 1'-0"



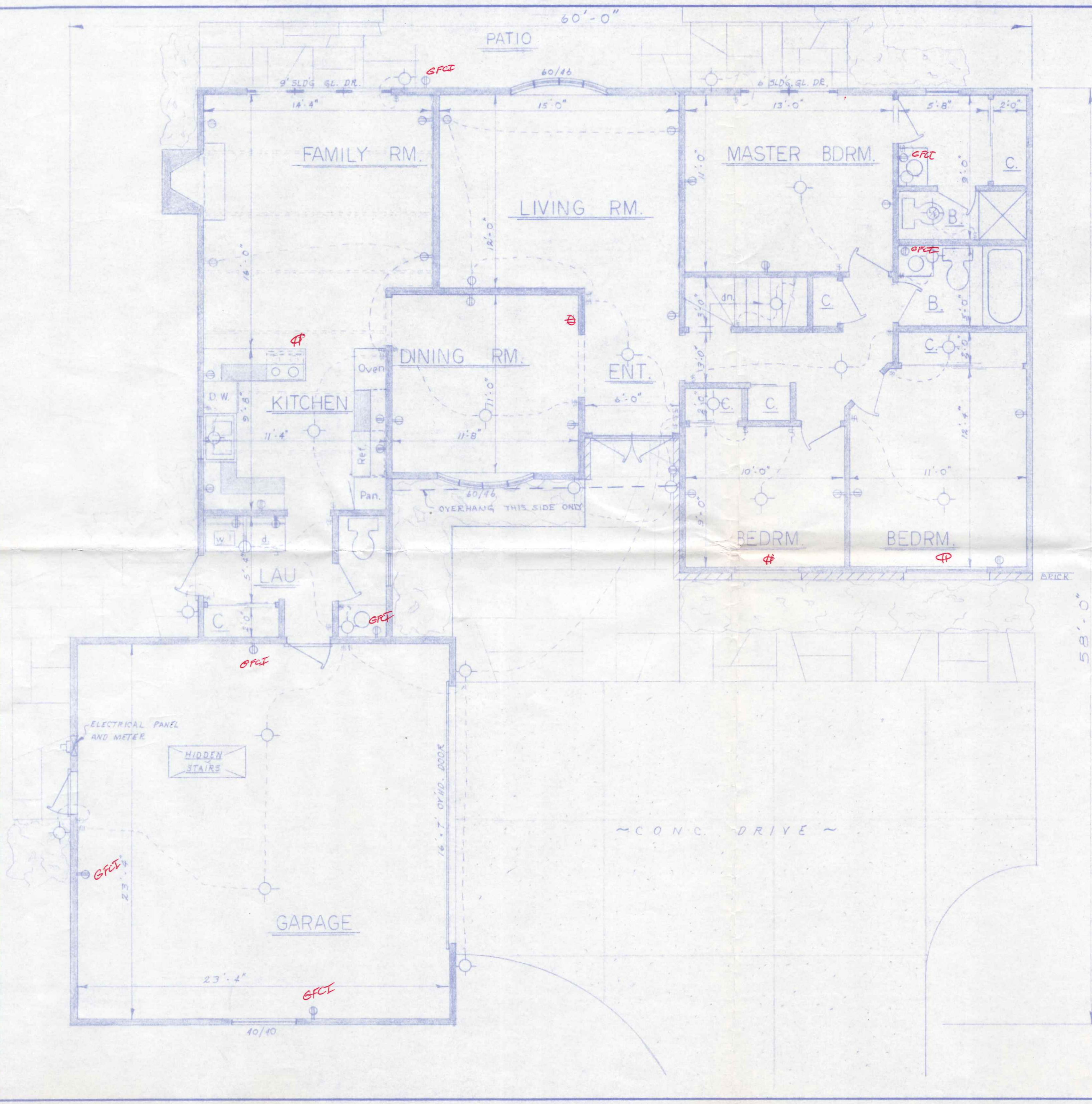
RIGHT ELEVATION
1/8" = 1'-0"



REAR ELEVATION
1/8" = 1'-0"

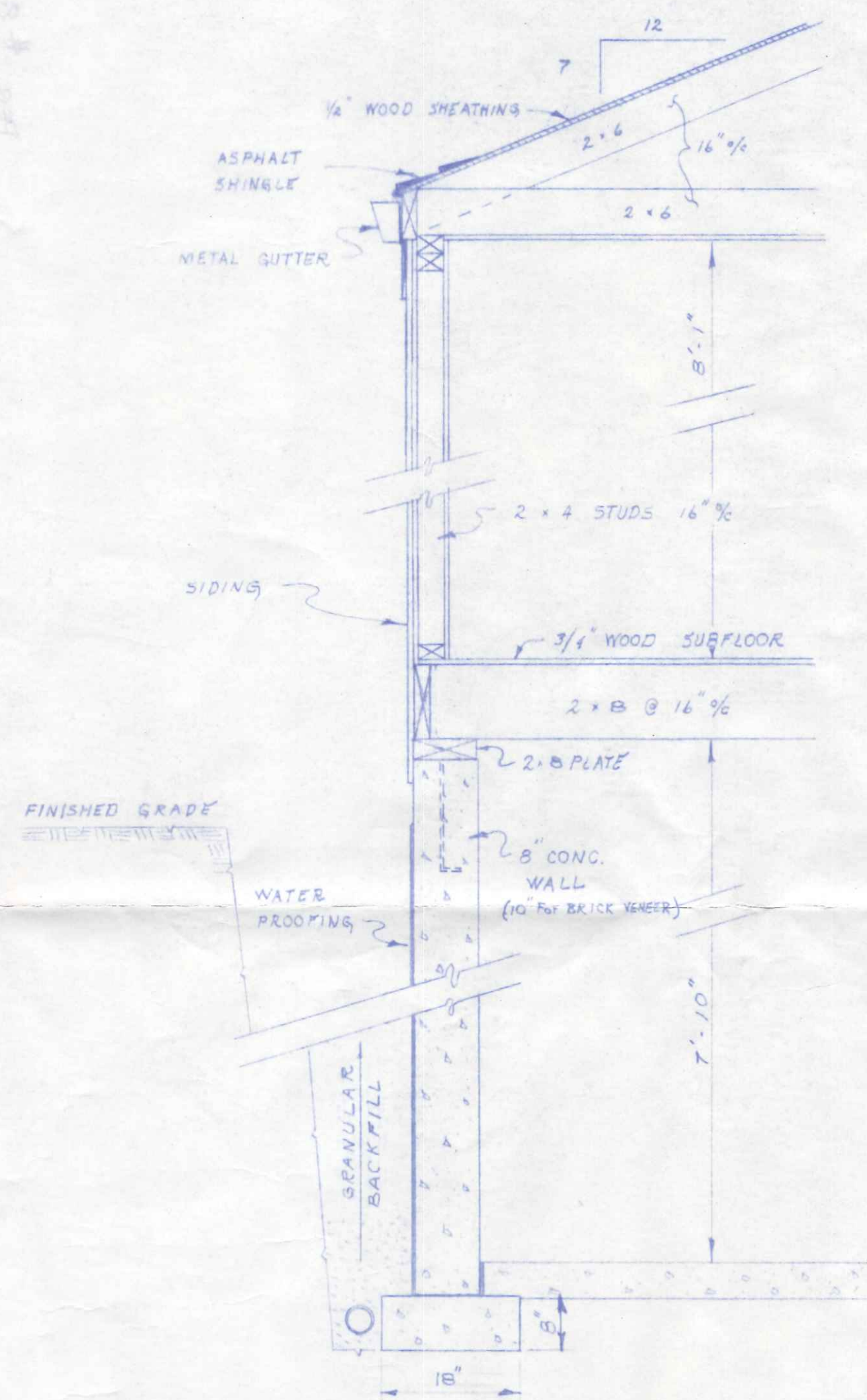
745
845 *Cypress Creek*

BECK'S CONSTRUCTION CO.		
SCALE: AS NOTED	APPROVED BY:	DRAWN BY R.W.W.
DATE: JUL. '84		REVISED
ELEVATIONS		
		DRAWING NUMBER 2 OF 3



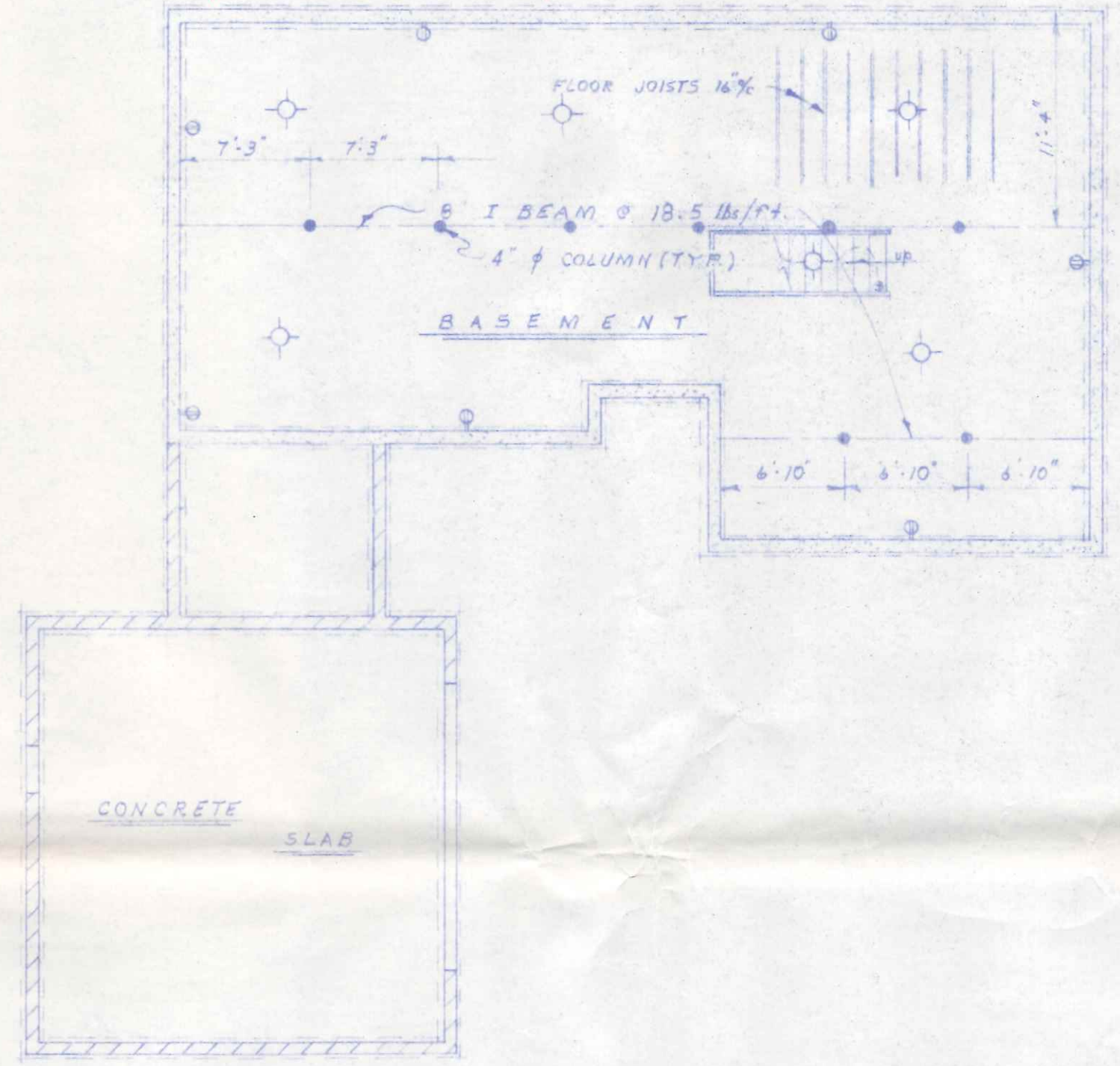
BECK'S CONSTRUCTION CO.		
SCALE: 1/4" = 1'-0"	APPROVED BY:	DRAWN BY R.W.W.
DATE: JUL. '84		REVISED
FLOOR PLAN		
DRAWING NUMBER		1 OF 3

5' over
5-1/2 ft hor.



WALL SECTION
3/4" = 1'-0"

REINFORCING RODS REQUIRED THIS WALL



FOUNDATION PLAN
1/8" = 1'-0"

Beck Construction Co.

BECK'S CONSTRUCTION CO.		
SCALE: AS NOTED	APPROVED BY:	DRAWN BY R.W.W.
DATE: JUL. '84		REVISED
DETAIL SHEET		
		DRAWING NUMBER 3 of 3